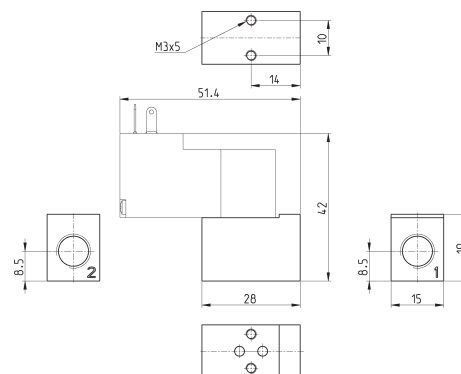


## Single sub-base for Series PD lateral interface



Single sub-base suitable for 2-way solenoid valves  
Series PD and PL models PD000-2A..., PL000-9B...  
Use solenoid valves with fixing screws for metal (see  
codification page)

Material: anodized aluminium  
Connections: G1/8 threads



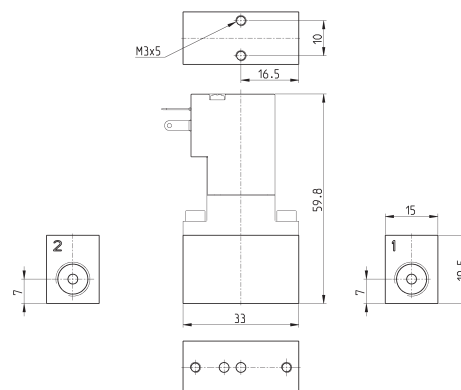
Mod.
PDA01-1/8

## Single sub-base for Series PD bottom interface



Single sub-base suitable for Series PD 2-way solenoid  
valve models PD000-2C... and PD000-2CR...

Material: anodized aluminium  
Connections: G1/8 threads



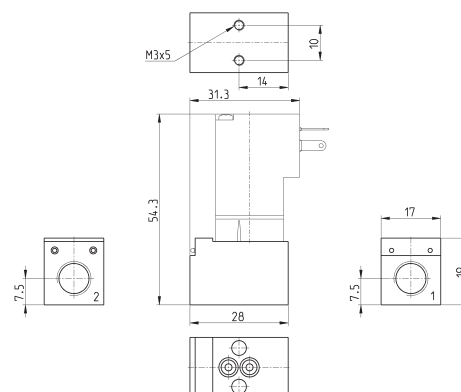
Mod.
PDC01-1/8

## Single sub-base for Series PD bottom interface



Single sub-base suitable for Series PD 2-way solenoid  
valve models PD000-2DF... and PD000-2DR...

Material: anodized aluminium  
Connections: G1/8 threads



Mod.
PDD01-1/8