

CODING EXAMPLE

DC	B	1	0	-	12
DC	SERIES				
B	MANIFOLD: B = For type VB solenoid valves				
1	SIZE 1 = 10.5 mm 2 = 16 mm 4 = 25 mm				
0	SERVO-PILOT 0 = Kit included for internal/external servo-pilot supply				
12	N° OF POSITIONS: 2 3 4 ... 16 17 (no D4) 18 (no D4) 19 (no D4)				

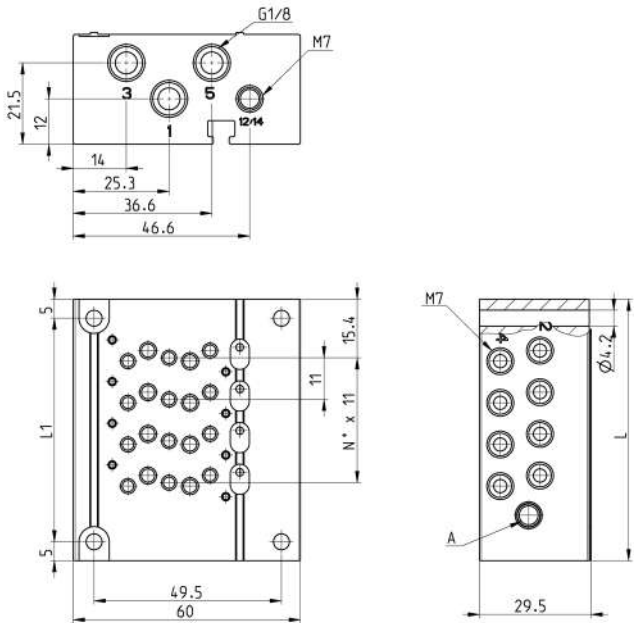
SOLENOID VALVES VB VERSION

Manifolds for solenoid valves model VB, Size 10,5



The Manifold package includes a closing cap and a spool to insert in position A, necessary to establish internal or external pilot supply. In the configuration with the cap only, pilot supply is established through connection 1, channels 12/14 must be closed.

In the other variant with cap and spool, channels 1 and 12/14 are separated and must be supplied individually.



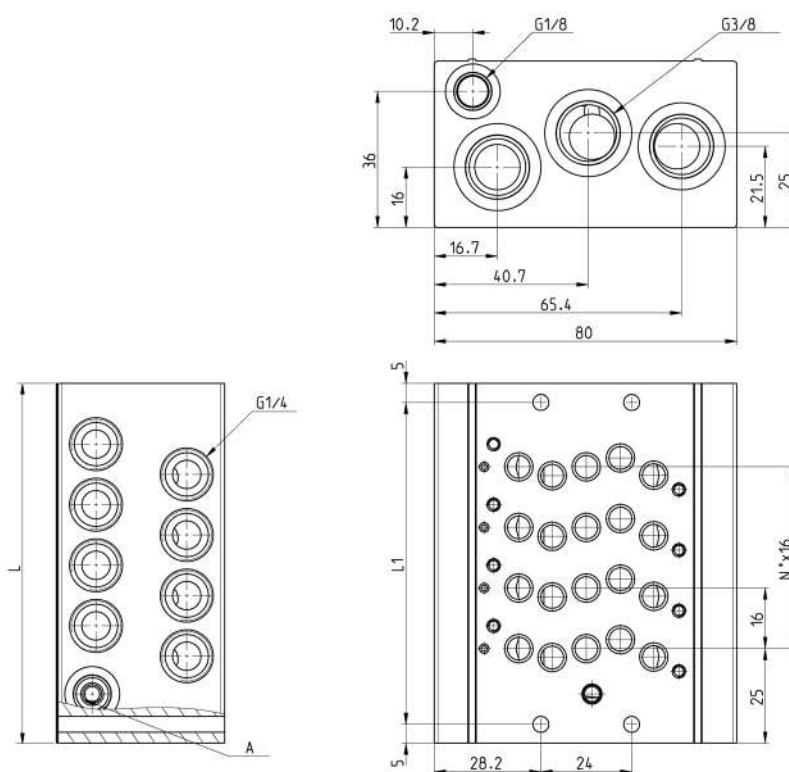
DIMENSIONS			
Mod.	Nr positions	L	L1
DCB10-2	2	47	37
DCB10-3	3	58	48
DCB10-4	4	69	59
DCB10-5	5	80	70
DCB10-6	6	91	81
DCB10-7	7	102	92
DCB10-8	8	113	103
DCB10-9	9	124	114
DCB10-10	10	135	125
DCB10-11	11	146	136
DCB10-12	12	157	147
DCB10-13	13	168	158
DCB10-14	14	179	169
DCB10-15	15	190	180
DCB10-16	16	201	191
DCB10-17	17	212	202
DCB10-18	18	223	213
DCB10-19	19	234	224

Manifolds for solenoid valves model VB, Size 16



The Manifold package includes a closing cap and a spool to insert in position A, necessary to establish internal or external pilot supply. In the configuration with the cap only, pilot supply is established through connection 1, channels 12/14 must be closed.

In the other variant with cap and spool, channels 1 and 12/14 are separated and must be supplied individually.



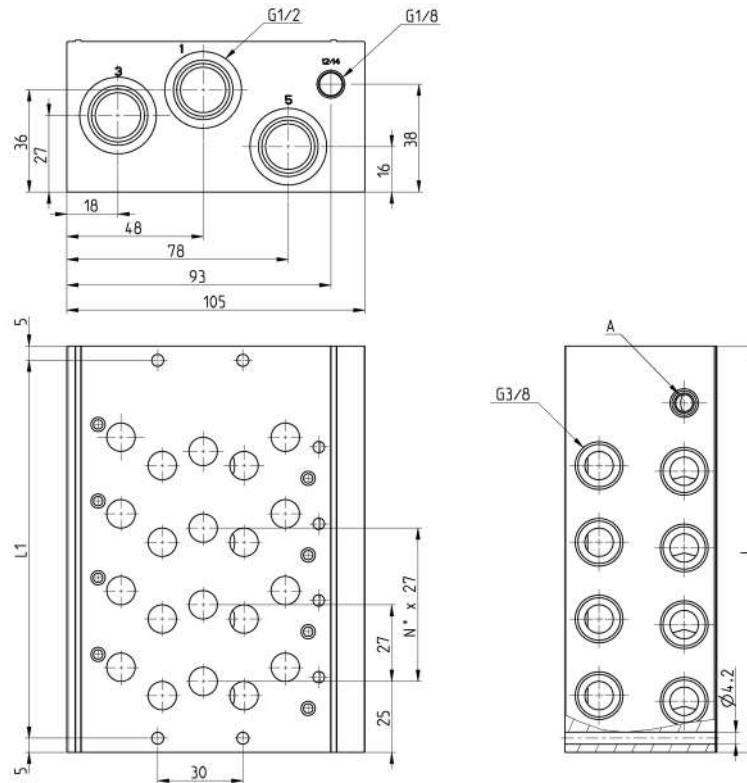
DIMENSIONS			
Mod.	Nr positions	L	L1
DCB20-2	2	63	53
DCB20-3	3	79	69
DCB10-4	4	95	85
DCB20-5	5	111	101
DCB20-6	6	127	117
DCB20-7	7	143	133
DCB20-8	8	159	149
DCB20-9	9	175	165
DCB20-10	10	191	181
DCB20-11	11	207	197
DCB20-12	12	223	213
DCB20-13	13	239	229
DCB20-14	14	255	245
DCB20-15	15	271	261
DCB20-16	16	287	277
DCB20-17	17	303	293
DCB20-18	18	319	309
DCB20-19	19	335	325

Manifolds for solenoid valves model VB, Size 25



The Manifold package includes a closing cap and a spool to insert in position A, necessary to establish internal or external pilot supply. In the configuration with the cap only, pilot supply is established through connection 1, channels 12/14 must be closed.

In the other variant with cap and spool, channels 1 and 12/14 are separated and must be supplied individually.



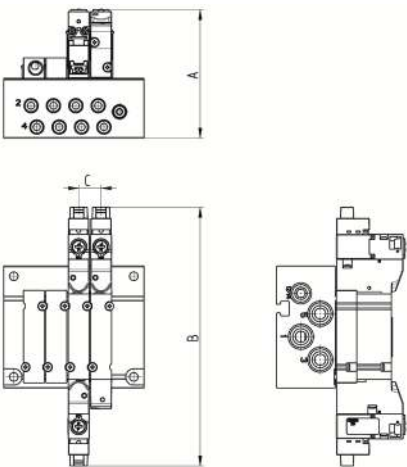
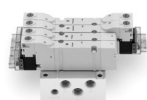
DIMENSIONS			
Mod.	Nr positions	L	L1
DCB40-2	2	89	79
DCB40-3	3	116	106
DCB40-4	4	143	133
DCB40-5	5	170	160
DCB40-6	6	197	187
DCB40-7	7	224	214
DCB40-8	8	251	241
DCB40-9	9	278	268
DCB40-10	10	305	295
DCB40-11	11	332	322
DCB40-12	12	359	349
DCB40-13	13	386	376
DCB40-14	14	413	403
DCB40-15	15	440	430
DCB40-16	16	467	457

CODING EXAMPLE MANIFOLD WITH SOLENOID VALVES AND FITTINGS

DC	B	1	E	R	A	-	MBMXCVB	-	3BX2AB	-	CSL	-	R
-----------	----------	----------	----------	----------	----------	----------	----------------	----------	---------------	----------	------------	----------	----------

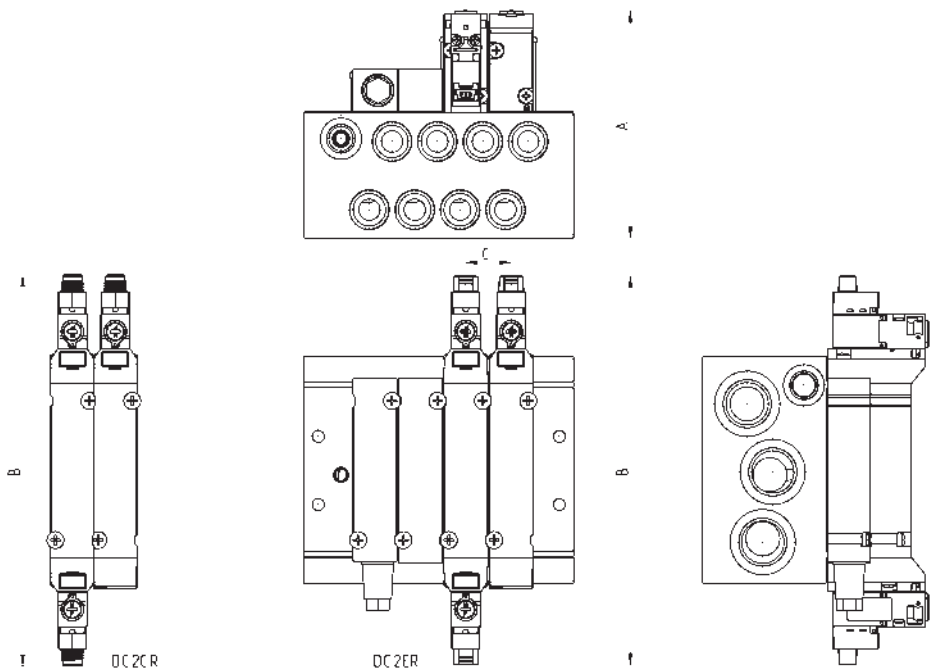
DC	SERIES		
B	MANIFOLD WITH SOLENOID VALVES B = For type VB solenoid valve		
1	SIZE 1 = 10.5 mm 2 = 16 mm 4 = 25 mm		
E	ACTUATION E = Electric (D1 and D2) 3 = Electric 15 mm (D2 and D4) C = Electric with M8 connector (D1 and D2)		
R	TYPE OF MANUAL OVERRIDE P = push button (not for 3 actuation) R = with push and turn device		
A	SERVO-PILOT SUPPLY A = internal B = external		
MBMXCVB	TYPE OF SOLENOID VALVE M = 5/2 Monostable B = 5/2 Bistable C = 2 x 3/2 NC A = 2 x 3/2 NO G = 2 x 3/2 (NC + NO) V = 5/3 CC K = 5/3 CO N = 5/3 CP L = Free position X = Additional supply and exhaust Y = Additional supply and exhaust with silencer		
3BX2AB	CONNECTIONS ON VALVE POSITIONS (OUTLETS 2 AND 4 ON MANIFOLD) T = Thread A = Ø4 (D1) Fittings 6512 4-M7-M B = Ø6 (D1) Fittings 6512 6-M7-M; (D2) S6510 6-1/4 C = Ø8 (D2) Fittings S6510 8-1/4 D = Ø10 (D2) Fittings 6512 10 1/4-M; (D4) S6510 10-3/8 E = Ø12 (D4) Fittings S6510 12-3/8 F = Ø14 (D4) Fittings S6510 14-3/8 L = Free position X = Threaded plate Y = See codes D1AVB-Y / D2AVB-Y / D4AVB-Y		
CSL	<div>MANIFOLD CONNECTIONS (supply and exhausts)</div> <div>T = Thread (on both sides)</div> <div>C = Fittings Ø8 on connections 1;3;5</div> <div>CS = Fittings Ø8 on supply + silencers on exhausts</div> <div>D = Fittings Ø10 on connections 1;3;5</div> <div>DS = Fittings Ø10 on supply + silencers on exhausts</div> <div>E = Fittings Ø12 on connections 1;3;5</div> <div>ES = Fittings Ø12 on supply + silencers on exhausts</div> <div>F = Fittings Ø14 on connections 1;3;5</div> <div>FS = Fittings Ø14 on supply + silencers on exhausts</div> <div>G = Fittings Ø16 on connections 1;3;5</div> <div>GS = Fittings Ø16 on supply + silencers on exhausts</div> <div>CONNECTION SIDE</div> <div>= Both</div> <div>(The servo-pilot fitting will be mounted on the right side)</div> <div>L = Fittings on the Left (right side covered)</div> <div>R = Fittings on the Right (left side covered)</div> <div>Servo-pilot fittings:</div> <div>Ø6 (D1) 6512 6-M7-M; (D2) S6510 6-1/8; Ø8 (D4) S6510 8-1/8</div> <div>(D1) 6512 8-1/8-M</div> <div>(D1) 6512 8-1/8-M + 2921 1/8</div> <div>(D2) S6510 10-3/8</div> <div>(D2) S6510 10-3/8 + 2921 3/8</div> <div>(D2) S6510 12-3/8</div> <div>(D2) S6510 12-3/8 + 2931 3/8</div> <div>(D2) S6510 14-3/8</div> <div>(D2) S6510 14-3/8 + 2931 3/8</div> <div>(D4) S6510 16-1/2</div> <div>(D4) S6510 16-1/2 + 2921 1/2</div> <div>(D2) S6510 8-3/8</div> <div>(D2) S6510 8-3/8 + 2921 3/8</div> <div>(D4) S6510 10-1/2</div> <div>(D4) S6510 10-1/2 + 2921 1/2</div> <div>(D4) S6510 12-1/2</div> <div>(D4) S6510 12-1/2 + 2921 1/2</div> <div>(D4) S6510 14-1/2</div> <div>(D4) S6510 14-1/2 + 2921 1/2</div>		
R	FIXING: = Direct R = Port for DIN rail		
VERSION 3, through the connector with rectifier bridge, can be used for AC applications. (see the connectors at the end of the section)			

Manifold with solenoid valves, outlets on subbase - size 10,5



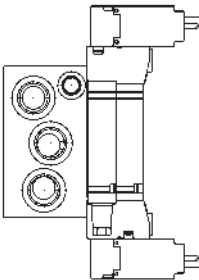
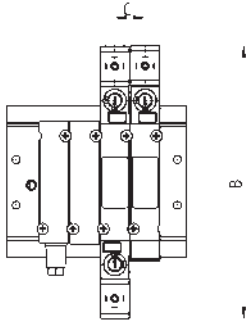
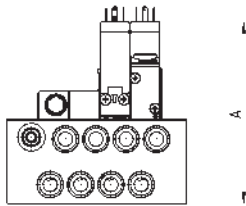
DIMENSIONS			
Mod.	A	B	C
DCB1ER-..	63	127.2	11
DCB1CR-..	63	128.2	11

Manifold with solenoid valves, outlets on base - size 16



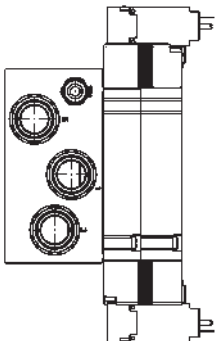
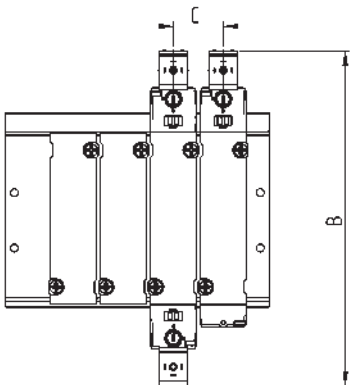
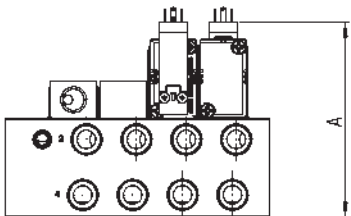
DIMENSIONS			
Mod.	A	B	C
DCB2ER-..	105	136.7	16
DCB2CR-..	105	137.7	16

Manifold with solenoid valves, outlets on base - size 16



DIMENSIONS			
Mod.	A	B	C
DCB23R-..	105	181.5	16

Manifold with solenoid valves, outlets on base - size 25



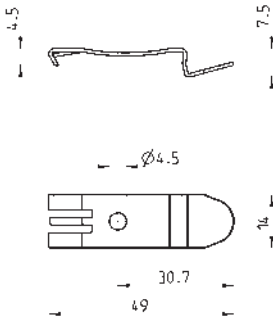
DIMENSIONS			
Mod.	A	B	C
DCB43R-..	51.7	150	27

Mounting brackets for DIN rail



DIN EN 50022 (7,5mm x 35mm - width 1)

Supplied with:
2x plates
2x screws M4 UNI 5931
2x nuts (D2 and D4)
2x M4 UNI EN ISO 7089 (D2) washers

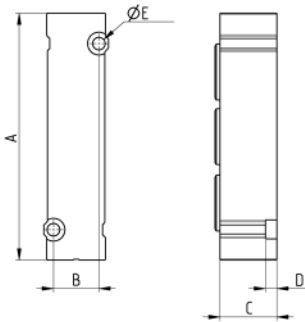


Mod.	
PCF-D1	(only for D1)
PCF-D2	(only for D2)
PCF-D4	(only for D4)

Blanking plate for manifolds - free position L



The following is supplied:
1x plate
2x screws
1x seal.

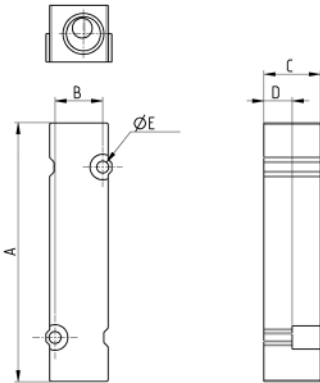
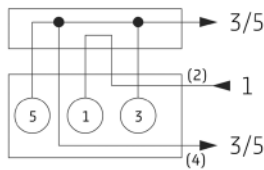


DIMENSIONS						
Mod.	Size	A	B	C	D	ØE
D1AVA-L	10.5	45.5	8.4	10	5	2.1
D2AVB-L	16	65	12	15	3	3.3
D4AVA-L	25	92.5	19	20	5	4.2

Module X for additional supply and exhaust for size 10,5



The following is supplied:
1x plate
2x screws
1x seal

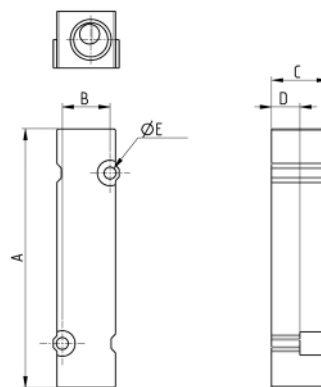
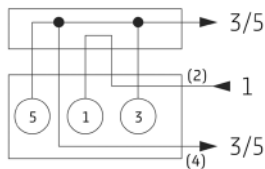


DIMENSIONS						
Mod.	Size	A	B	C	D	ØE
D1AVB-X	10.5	45	8.4	10	5	2.1

Module X for additional supply and exhaust for size 16



The following is supplied:
1x plate
2x screws
1x seal

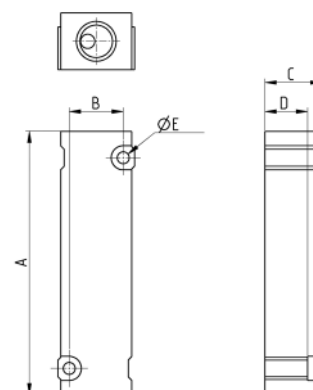
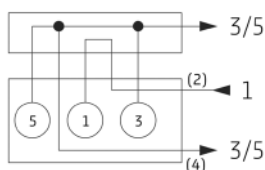


DIMENSIONS						
Mod.	Size	A	B	C	D	$\varnothing E$
D2AVB-X	16	65	12	15	12	3,3

Module X for additional supply and exhaust for size 25



The following is supplied:
1x plate
2x screws
1x seal

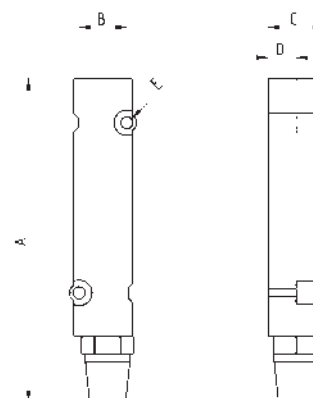
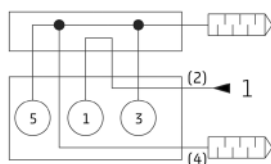


DIMENSIONS						
Mod.	Size	A	B	C	D	$\varnothing E$
D4AVB-X	25	65	19	20	15	4.2

Module Y for additional supply and exhaust with silencer for size 10,5



The following is supplied:
1x plate
2x screws
1x seal
2x silencers 2931 M7
1x fitting 6512 6-M7-M

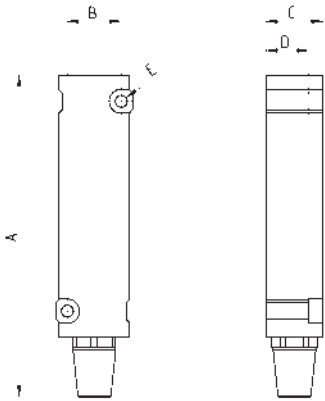
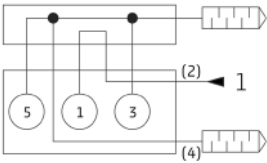


DIMENSIONS						
Mod.	Size	A	B	C	D	$\varnothing E$
D1AVB-Y	10.5	57	8.4	10	5	2.1

Module Y for additional supply and exhaust with silencer for size 16



The following is supplied:
1x plate
2x screws
1x seal
1x silencers 2931 1/4
1x silencers 2931 1/4
1x fitting 6512 1/4

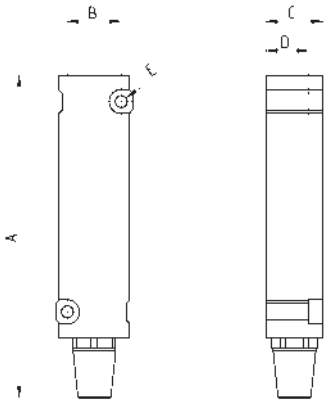
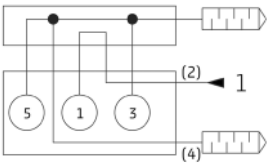


DIMENSIONS						
Mod.	Size	A	B	C	D	øE
D2AVB-Y	16	81,4	12	15	12	3.3

Module Y for additional supply and exhaust with silencer for size 25

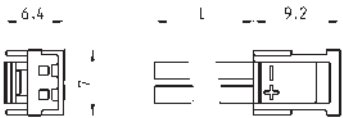


The following is supplied:
1x plate
2x screws
1x seal
1x silencer 2931 1/4
1x silencer 2931 3/8
1x fitting 6512 12-3/8



DIMENSIONS						
Mod.	Size	A	B	C	D	øE
D4AVB-Y	25	113,5	19	20	15	4.2

Connector Mod. 121-8..



Mod.	description	colour	L = cable length (mm)	cable holding
121-803	crimped cable	black	300	crimping
121-806	crimped cable	black	600	crimping
121-810	crimped cable	black	1000	crimping
121-830	crimped cable	black	3000	crimping