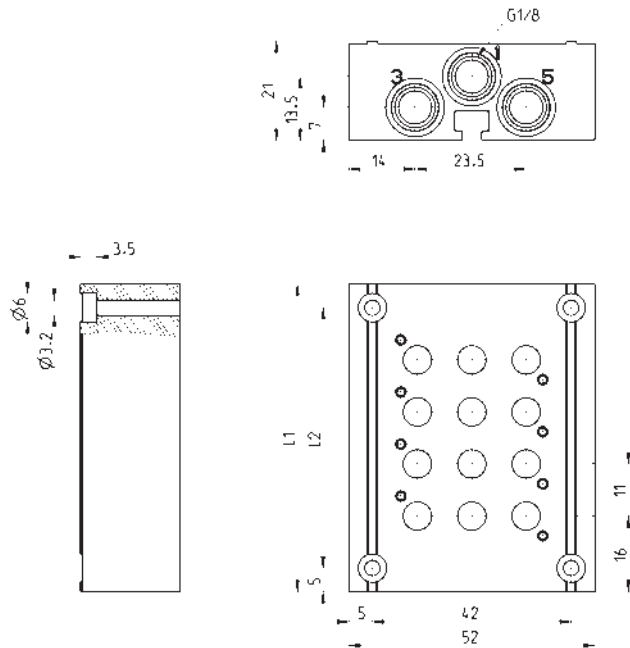


CODING EXAMPLE

DC	A	1	0	-	12
DC	SERIES				
A	MANIFOLD: A = For type VA valves				
1	SIZE 1 = 10.5 mm 2 = 16 mm 4 = 25 mm				
0	BODYTYPE 0 = body for sub-base assembly				
12	N° OF POSITIONS: 2 3 4 ... 16 17 (no D4) 18 (no D4) 19 (no D4)				

Manifolds for valves model VA, Size 10,5

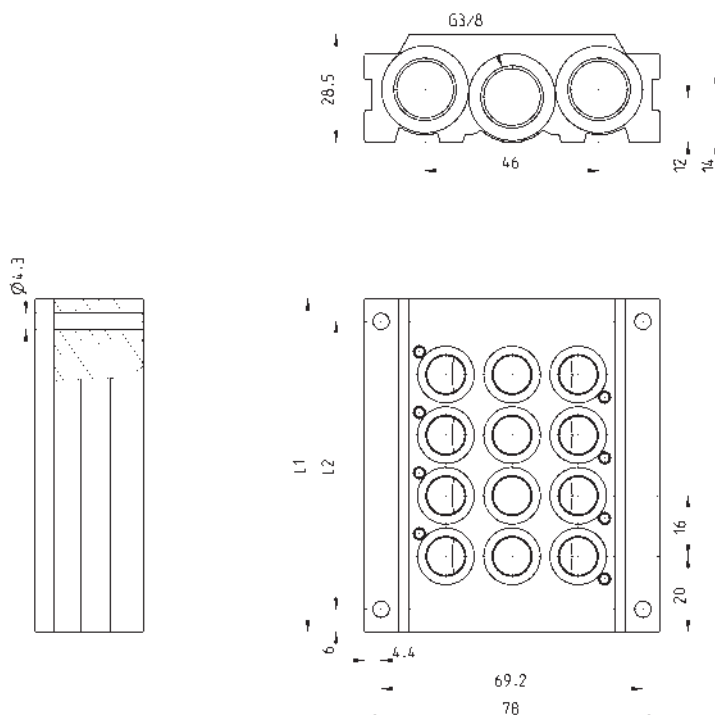
Note: the manifolds are supplied with seals and valves fixing screws.



DIMENSIONS			
Mod.	Nr positions	L1	L2
DCA10-2	2	43	33
DCA10-3	3	54	44
DCA10-4	4	65	55
DCA10-5	5	76	66
DCA10-6	6	87	77
DCA10-7	7	98	88
DCA10-8	8	109	99
DCA10-9	9	120	110
DCA10-10	10	131	121
DCA10-11	11	142	132
DCA10-12	12	153	143
DCA10-13	13	164	154
DCA10-14	14	175	165
DCA10-15	15	186	176
DCA10-16	16	197	187
DCA10-17	17	208	198
DCA10-18	18	219	209
DCA10-19	19	230	220

Manifolds for valves model VA, Size 16

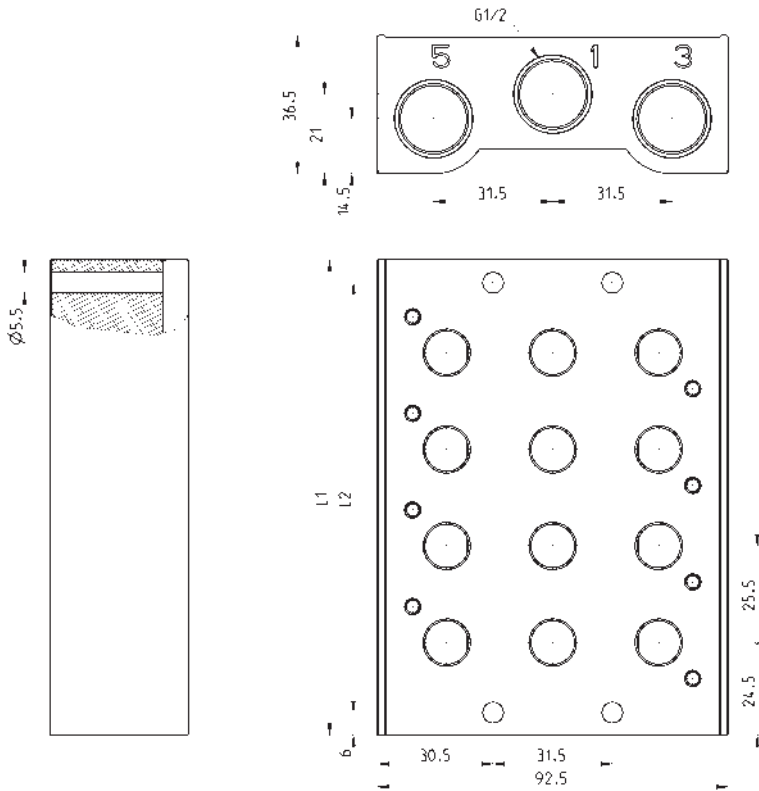
Note: the manifolds are supplied with seals and valves fixing screws.



DIMENSIONS			
Mod.	Nr positions	L1	L2
DCA20-2	2	56	44
DCA20-3	3	72	60
DCA20-4	4	88	76
DCA20-5	5	104	92
DCA20-6	6	120	108
DCA20-7	7	136	124
DCA20-8	8	152	140
DCA20-9	9	168	156
DCA20-10	10	184	172
DCA20-11	11	200	188
DCA20-12	12	216	204
DCA20-13	13	232	220
DCA20-14	14	248	236
DCA20-15	15	264	252
DCA20-16	16	280	268
DCA20-17	17	296	284
DCA20-18	18	312	300
DCA20-19	19	328	316

Manifolds for valves model VA, Size 25

Note: the manifolds are supplied with seals and valves fixing screws.



DIMENSIONS			
Mod.	Nr positions	L1	L2
DCA40-2	2	74.5	49
DCA40-3	3	100	74.5
DCA40-4	4	125.5	100
DCA40-5	5	151	125.5
DCA40-6	6	176.5	151
DCA40-7	7	202	176.5
DCA40-8	8	227.5	202
DCA40-9	9	253	227.5
DCA40-10	10	278	253
DCA40-11	11	304	278
DCA40-12	12	329.5	304
DCA40-13	13	355	329.5
DCA40-14	14	380.5	355
DCA40-15	15	406	380.5
DCA40-16	16	431.5	406

KIT CONTAINING SEAL + VALVE FIXING SCREWS



DCA10-K1



DCA20-K1



DCA40-K1

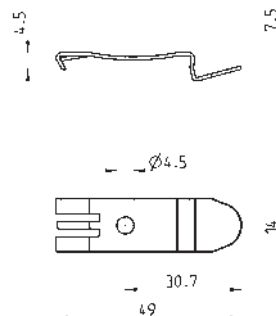
kit to be purchased in case of replacing L-X-Y with valve

Mounting brackets for DIN rail



DIN EN 50022 (7,5mm x 35mm - width 1)

Supplied with:
2x plates
2x screws M4x6 UNI 5931
2x nuts

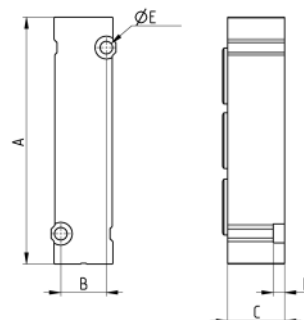


Mod.
PCF-E531 (only for D1)

Blanking plate for manifolds - free position L



The following is supplied:
1x plate
2x screws
1x seal.

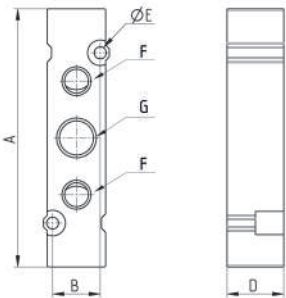


DIMENSIONS						
Mod.	Pitch	A	B	D	E	C
D1AVA-L	10,5	45.5	8.4	5	2.1	10
D2AVA-L	16	65	12	3	3.3	15
D4AVA-L	25	92.5	19	5	4.2	20

Module X for additional supply and exhaust for size 10,5



The following is supplied:
1x plate
2x screws
1x seal

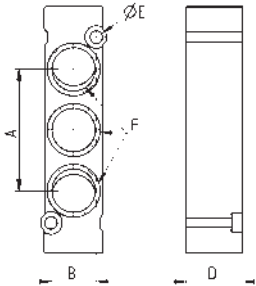


DIMENSIONS							
Mod.	Pitch	A	B	D	$\varnothing E$	F	G
D1AVA-X	10.5	45.5	8.4	10	2.1	M5	1/8

Module X for additional supply and exhaust for size 16



The following is supplied:
1x plate
2x screws
1x seal

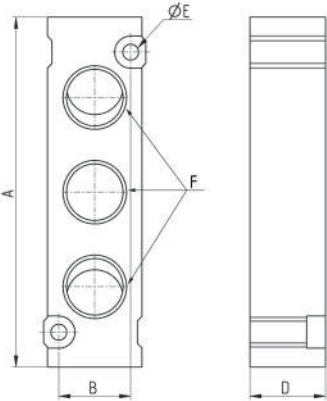


DIMENSIONS						
Mod.	Pitch	A	B	D	$\varnothing E$	F
D2AVA-X	16	65	12	15	3,3	G1/4

Module X for additional supply and exhaust for size 25



The following is supplied:
1x plate
2x screws
1x seal.

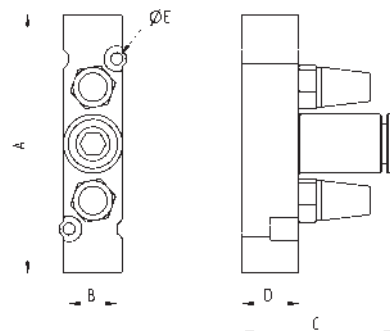


DIMENSIONS						
Mod.	Pitch	A	B	D	$\varnothing E$	F
D4AVA-X	25	92.5	19	20	4.2	G3/8

Module Y for additional supply and exhaust with silencer for size 10,5



The following is supplied:
1x plate
2x screws
1x seal.
2x silencers 2931 M5
1x fitting 6512 6-M7

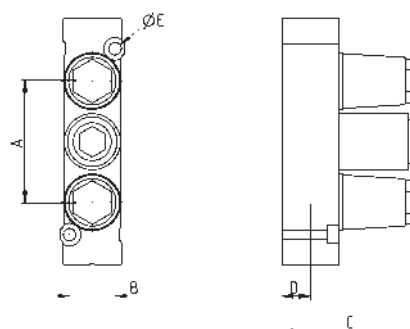


DIMENSIONS						
Mod.	Pitch	A	B	C	D	ØE
D1AVA-Y	10.5	45.5	8.4	27	10	2.1

Module Y for additional supply and exhaust with silencer for size 16



The following is supplied:
1x plate
2x screws
1x seal.
2x silencers 2931 M5
1x fitting 6512 6-M7

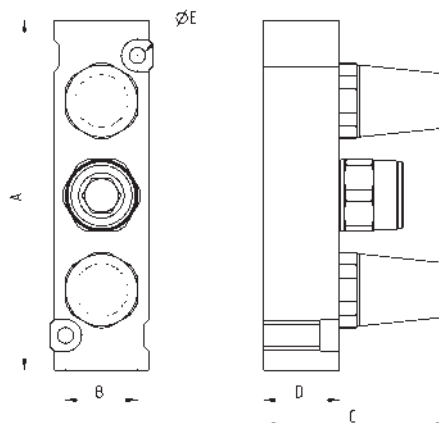


DIMENSIONS						
Mod.	Pitch	A	B	C	D	ØE
D2AVA-Y	16	65	12	37	15	3,3

Module Y for additional supply and exhaust with silencer for size 25



The following is supplied:
1x plate
2x screws
1x seal.
2x silencers 2931 3/8
1x fitting 6512 12-3/8



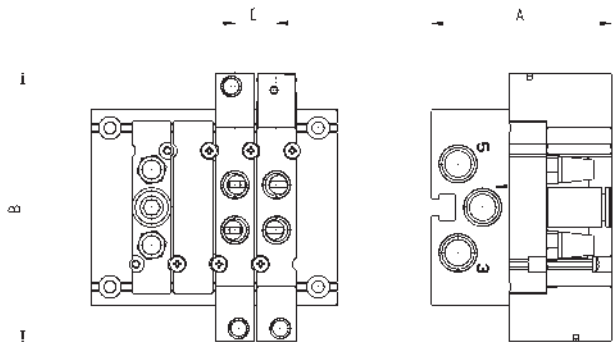
DIMENSIONS						
Mod.	Pitch	A	B	C	D	ØE
D4AVA-Y	25	92.5	19	48.5	20	4.2

CODING EXAMPLE MANIFOLD WITH VALVES AND FITTINGS

DC	A	1	E	P	-	MBMXCVB	-	3BX2AB	-	CSL	-	R
----	---	---	---	---	---	---------	---	--------	---	-----	---	---

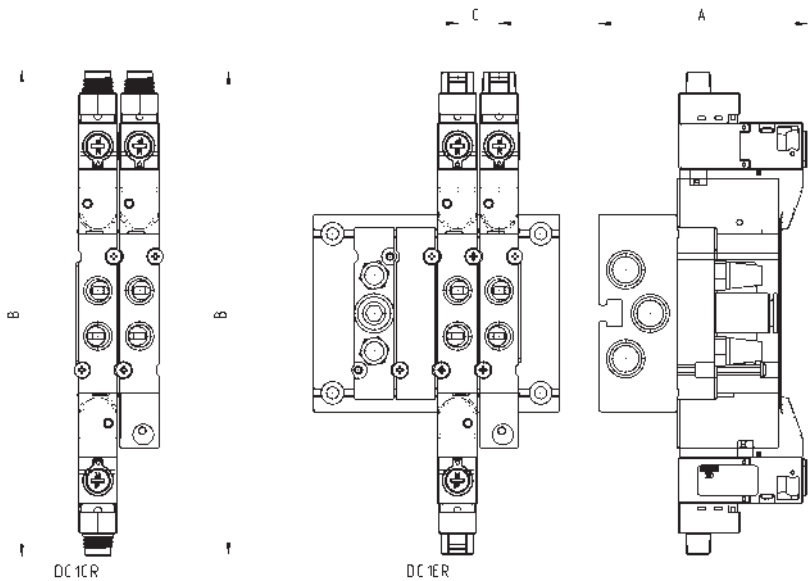
DC	SERIES		
A	MANIFOLD WITH VALVES A = For type VA valve		
1	SIZE/DIMENSION 1 = 10.5 mm 2 = 16 mm 4 = 25 mm		
E	ACTUATION E = Electric (D1 and D2) 3 = Electric with solenoid 15 mm (D2 and D4) C = Electric with M8 connector (D1 and D2) P = Pneumatic		
P	TYPE OF MANUAL OVERRIDE P = push button (not for "3" actuation) R = with push and turn device 0 = without manual override (for "P" actuation)		
MBMXCVB	TYPE OF VALVE / SOLENOID VALVE M = 5/2 Monostable B = 5/2 Bistable C = 2 x 3/2 NC A = 2 x 3/2 NO G = 2 x 3/2 (NC + NO) V = 5/3 CC K = 5/3 CO N = 5/3 CP L = Free position X = Additional supply and exhaust Y = Additional supply and exhaust with silencer	SOLENOID VALVE WITH EXTERNAL SERVO-PILOT SUPPLY MZ = 5/2 Monostable BZ = 5/2 Bistable CZ = 2 x 3/2 NC AZ = A = 2 x 3/2 NO GZ = 2 x 3/2 (NC + NO) VZ = 5/3 CC KZ = 5/3 CO NZ = 5/3 CP	
3BX2AB	CONNECTIONS ON VALVE POSITIONS T = Thread A = Ø4 (D1) Fittings 6512 4-M7-M B = Ø6 (D1) Fittings 6512 6-M7-M C = Ø8 (D2) Fittings S6510 8-1/4 D = Ø10 (D2) Fittings 6512 10-1/4-M E = Ø12 (D4) Fittings S6510 12-3/8 F = Ø14 (D4) Fittings S6510 14-3/8 L = Free position X = Threaded plate Y = See code D1AVA-Y / D2AVA-Y / D4AVA-Y	(D2) S6510 6-1/4 (D4) S6510 10-3/8	The pneumatically operated solenoid valves with external servo-pilot supply with connections from A to F are already equipped with fittings on the pilot ports Ø4 (D1 and D2) 6512 4 – M5 Ø6 (D4) 6512 6 – M5
CSL	MANIFOLD CONNECTIONS T = Thread (on both sides) C = Fittings on connections 1;3;5 CS = Fittings Ø 8 - Silencer 2931 1/8 on supply + silencers on exhausts D = Fittings Ø 10 on connections 1;3;5 DS = Fittings Ø 10 on supply + silencers on exhausts E = Fittings Ø 12 on connections 1;3;5 ES = Fittings Ø 12 on supply + silencers on exhausts F = Fittings Ø 14 on connections 1;3;5 FS = Fittings Ø 14 on supply + silencers on exhausts G = Fittings Ø 16 (D4), S6510 16-1/2 GS = Fittings Ø 16 on supply + silencers on exhausts CONNECTION SIDE = Both L = Fittings on the Left (right side covered) R = Fittings on the Right (left side covered)	(D1) 6512 8-1/8-M (D1) 6512 8-1/8-M + 2921 1/8 (D2) S6510 10-3/8 (D2) S6510 10-3/8 + 2921 3/8 (D2) S6510 12 3/8 (D2) S6510 12 3/8 + 2921 3/8 (D4) S6510 14-1/2 (D4) S6510 14-1/2 + 2921 1/2 (D4) S6510 16-1/2 (D4) S6510 16-1/2 + 2921 1/2	(D2) S6510 8-3/8 (D2) S6510 8-3/8 + 2921 3/8 (D4) S6510 10-1/2 (D4) S6510 10-1/2 + 2921 1/2 (D4) S6510 12-1/2 (D4) S6510 12-1/2 + 2921 1/2
R	FIXING: = Direct R = Port for DIN rail (only for D1)		
In case of the same consecutive codes, group them and indicate the total quantity, for example: DCA1EP-MMMYCCVG-BBBYBAAA-CSL-R DCA1EP-3MY2CVG-3BYB3A-CSL-R VERSION 3, through the connector with rectifier bridge, can be used for AC applications. (see the connectors at the end of the section)			

Manifold with valves, outlets on the body - size 10,5



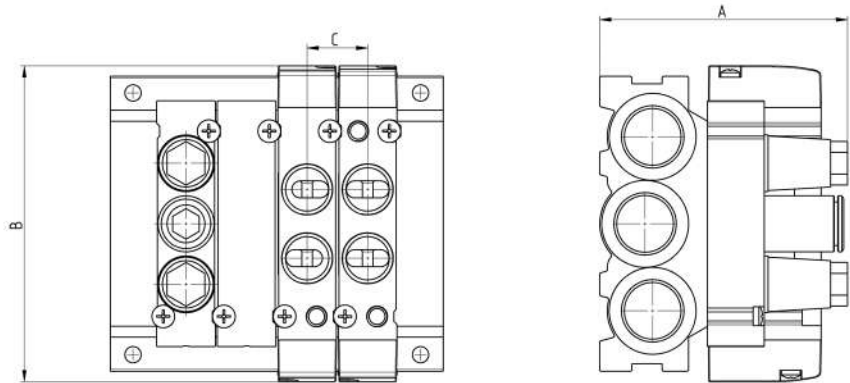
DIMENSIONS			
Mod.	A	B	C
DCA1P0-	47.5	71	11

Manifold with solenoid valves, outlets on the body - size 10,5



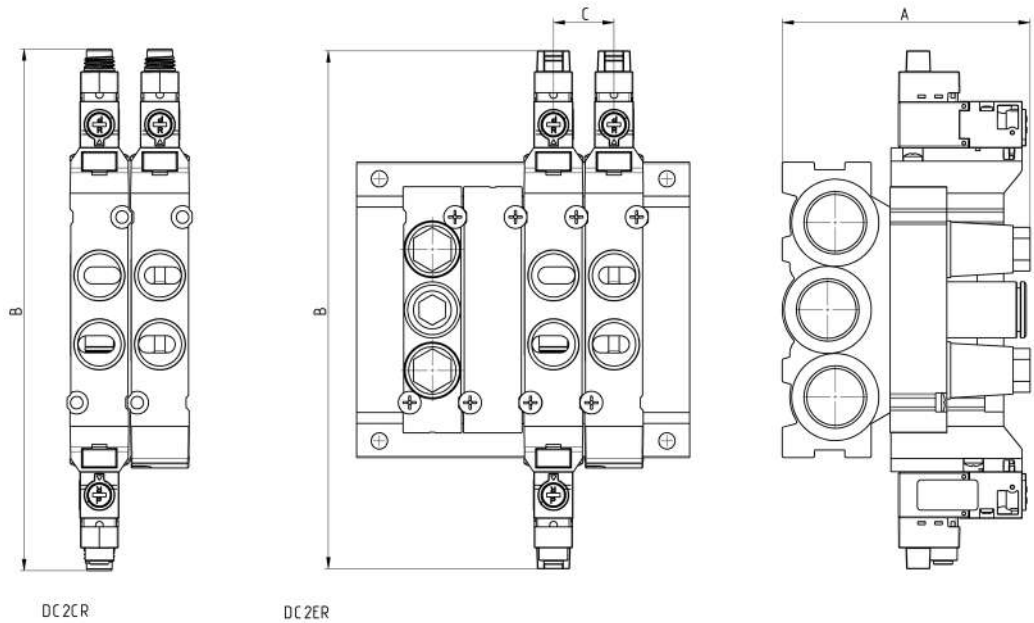
DIMENSIONS			
Mod.	A	B	C
DCA1ER-	55	127.2	11
DCA1CR-	55	128.2	11

Manifold with valves, outlets on the body - size 16



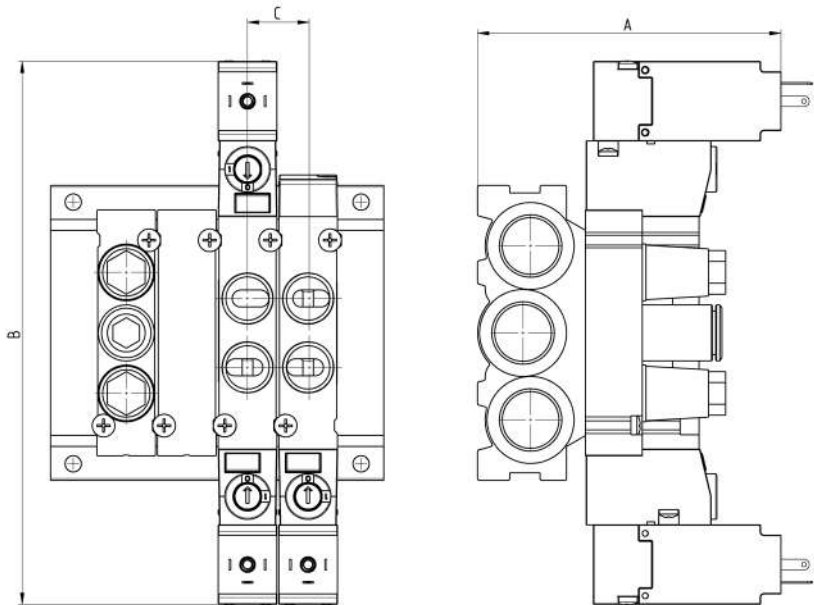
DIMENSIONS			
Mod.	A	B	C
DCA2P0-	65,5	83,5	16

Manifold with solenoid valves, outlets on the body - size 16



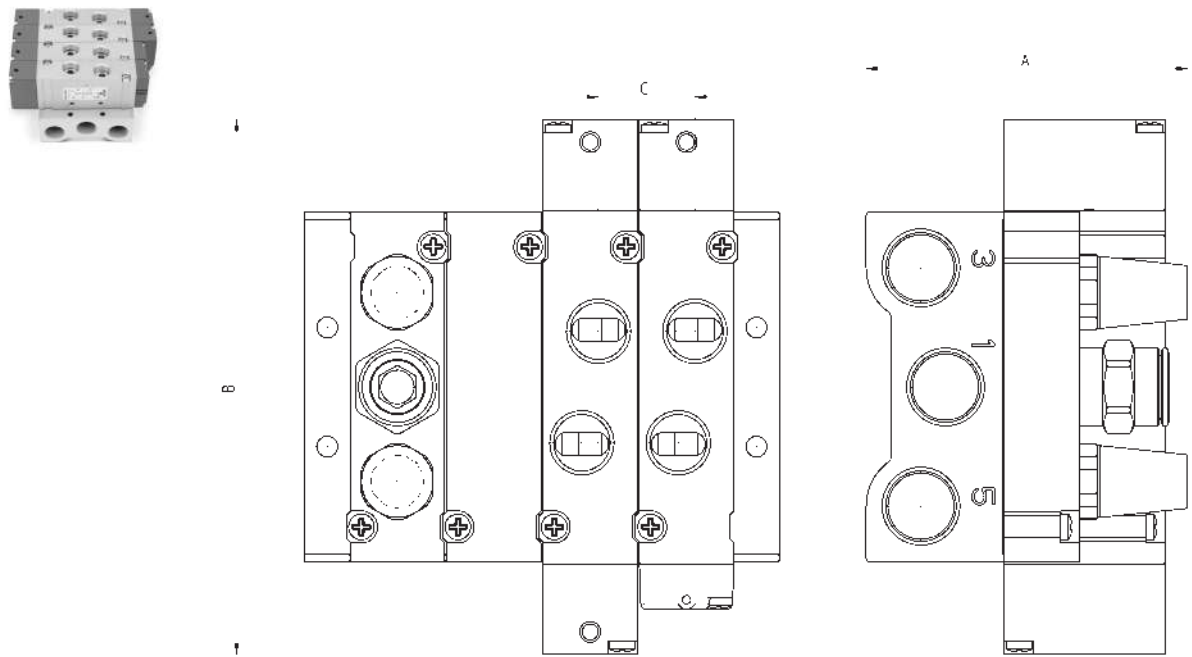
DIMENSIONS			
Mod.	A	B	C
DCA2ER-	65.5	136.7	16
DCA2CR-	65.5	137.7	16

Manifold with solenoid valves, outlets on the body - size 16



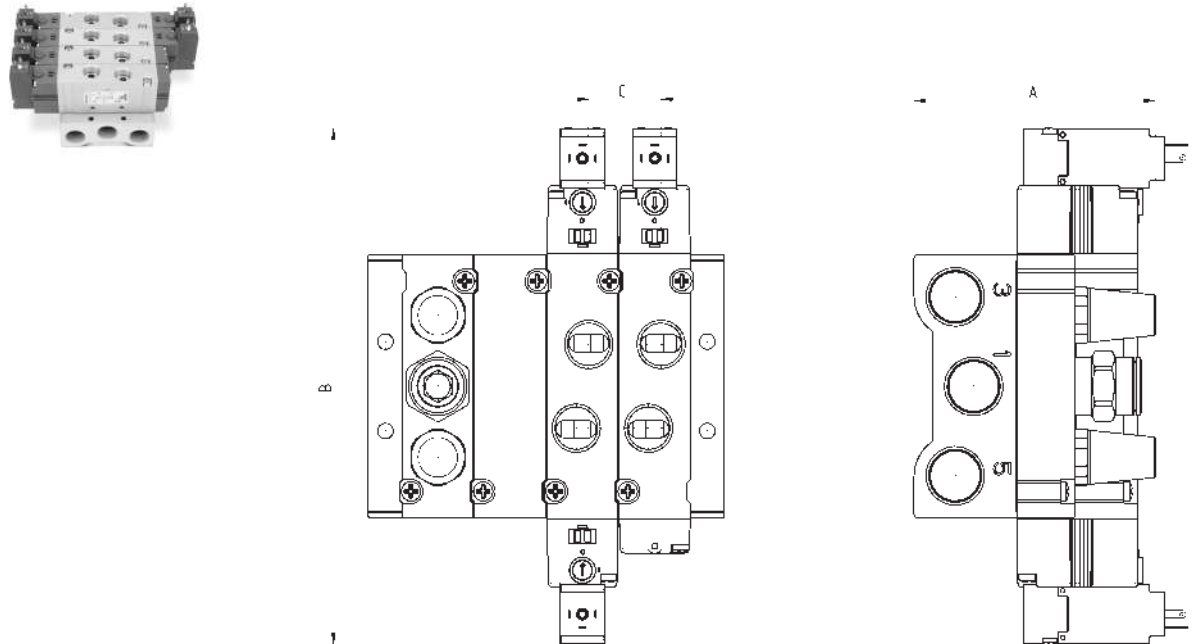
DIMENSIONS			
Mod.	A	B	C
DCA23R-	80.2	143.5	16

Manifold with valves, outlets on the body - size 25



DIMENSIONS			
Mod.	A	B	C
DCA4P0-	85	141.5	25,5

Manifold with solenoid valves, outlets on the body - size 25



DIMENSIONS			
Mod.	A	B	C
DCA43R-	85	181.5	25,5