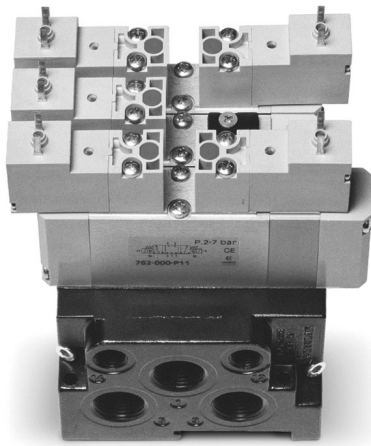


Series 7 valves and solenoid valves

VDMA 24563 (ISO 15407-1)
5/2 - 5/3-way CC CO CP



Size 26 mm (VDMA 24563-01)
Size 18 mm (VDMA 24563-02)

GENERAL DATA

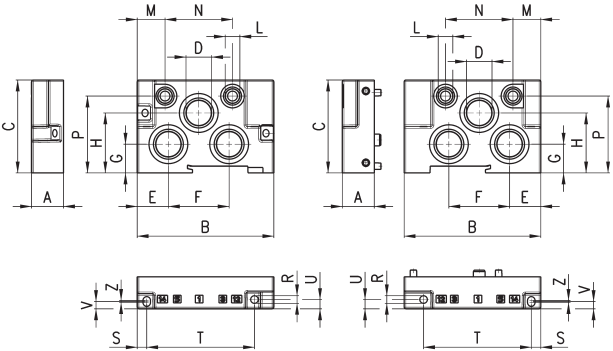
Construction	balanced spool type
Valve functions	5/2 - 5/3-way CC CO CP
Materials	AL body, spool base, polyamide endcovers, NBR seals
Mounting	by means of screws on the base
Ports	on sub-base
Operating temperature	0° C min. +50° C max
Fluid	filtered air (5 micron or less), without lubrication. If lubricated air is used, it is recommended to use ISOVG32 oil. Once applied the lubrication should never be interrupted.
Size	26 mm 18 mm
Installation	in any position
Operating pressure	P. max 7 bar
Nominal pressure	6 bar
Nominal flow	Qn Size 26 mm = 900 NL/min Qn Size 18 mm = 450 NL/min
Voltage	see coding
Voltage tolerance	± 10%
Power consumption	2W
Class of insulation	class F
Protection	IP54 (IP65 with connector DIN 40050)

End blocks for subbase



End blocks for subbase with conveyed inlets and exhausts and front outlets.

The following is supplied:
1x seal
2x fixing screws



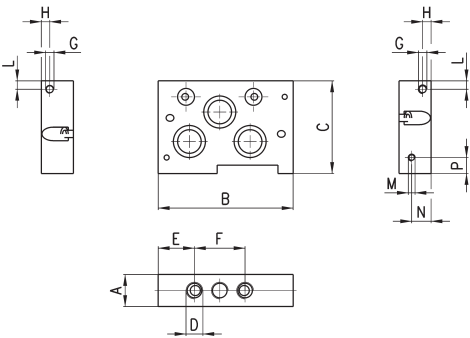
DIMENSIONS																			
Mod.	Size ISO	A	B	C	D	E	F	G	H	L	M	N	P	R	S	T	U	V	Z
701C-HN1	26 mm	27	107	65	G1/2	23	60	24,5	43	G1/8	21,5	58	55,5	4,5	7,5	61,5	6	6,2	4
702C-HN2	18 mm	19	81	55	G3/8	18,5	36	17	35,5	G1/8	16,5	40	45,5	4,5	4,65	63,85	5,5	4,35	1,3

Intermediate supply module



Intermediate supply module for manifold bases with conveyed inlets and exhausts and front outlets.

The following is supplied:
1x seal
2x fixing screws



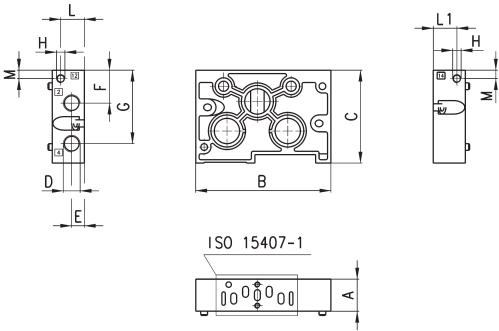
DIMENSIONS													
Mod.	Size ISO	A	B	C	D	E	F	G	H	L	M	N	P
701C-N1N	26 mm	27	100	65	G1/4	29	42	M5	6,5	10	M4	10	10
702C-N2N	18 mm	19	81	55	G1/8	22,5	28	M5	5	5	M4	11,5	9,5

Subbase for manifolds



Manifold subbase with conveyed inlets and exhausts and front outlets.

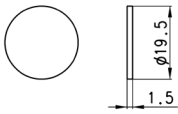
The following is supplied:
1x seal
2x fixing screws



DIMENSIONS													
Mod.		Size ISO	A	B	C	D	E	F	G	H	L	L1	M
701C-N1A	for pneumatic valves	26 mm	27	107	65	G1/4	11	23	53	M5	20,7	20,7	6,5
702C-N2A	for pneumatic valves	18 mm	19	81	55	G1/8	7,5	19,5	44,5	M5	13	6	7
701C-N1C		26 mm	27	107	65	G1/4	11	23	53	M5	20,7	20,7	6,5
702C-N2C		18 mm	19	81	55	G1/8	7,5	19,5	44,5	M5	13	6	7

Diaphragm cover for subbase

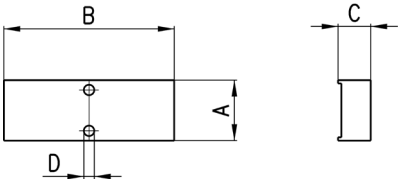
Diaphragm for subbase with conveyed inlet and exhausts and side outlets.



Mod.
701C-N1A-TP
702C-N2A-TP

Excluder tap for subbase

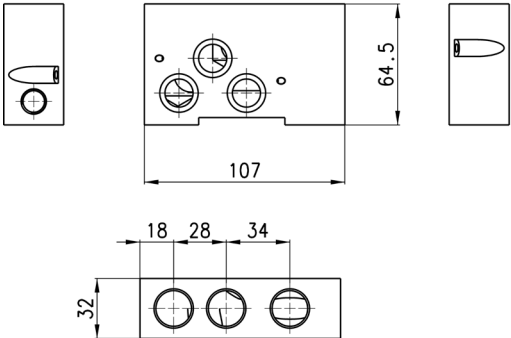
The following is supplied:
1x seal
2x screws



DIMENSIONS					
Mod.	Size ISO	A	B	C	D
701-TP	26 mm	26,5	61,7	10	4,2
702-TP	18 mm	18,5	52,2	10	3,2

Interface between ISO 01 and ISO 02

The following is supplied:
1x tap S2610 3/8
5x OR
2x screws



Mod.
701C-702C-A