

# Series MX pneumatic pilot operated pressure regulators

**New**

Ports: G3/8, G1/2, G3/4

Modular - Available with built-in pressure gauges or ports for gauges



- » Pneumatically operated regulation
- » Minimal pressure decreases
- » Integral return exhaust (relieving)

The availability of constant values of the secondary pressure ensures performance optimization and energy saving. All regulators are equipped with an integrated locking system and built-in pressure gauges for a more compact product.

The Series MX has been realized to offer a multi-sector solution that guarantees saving in terms of installation time, space and costs.

A special configurator, available on Camozzi website at <http://catalogue.camozzi.com> (sec. Configurators), allows the customer to choose the most suitable solution for his application, selecting single components or by configuring assembled FRLs.

## GENERAL DATA

|                              |  |
|------------------------------|--|
| <b>Construction</b>          | modular, compact, diaphragm type   |
| <b>Materials</b>             | see TABLE OF MATERIALS on the following page   |
| <b>Ports</b>                 | G3/8 - G1/2 - G3/4   |
| <b>Mounting</b>              | vertical in-line<br>wall-mounting (by means of clamps)   |
| <b>Operating temperature</b> | -5°C ÷ 50°C up to 16 bar (with the dew point of the fluid lower than 2°C at the min. working temperature)<br>-5°C ÷ 60°C up to 10 bar (with the dew point of the fluid lower than 2°C at the min. working temperature) |
| <b>Inlet pressure</b>        | 0 ÷ 16 bar   |
| <b>Outlet pressure</b>       | 10 bar   |
| <b>Overpressure exhaust</b>  | with relieving (standard)<br>without relieving   |
| <b>Nominal flow</b>          | see FLOW DIAGRAMS on the following pages   |
| <b>Fluid</b>                 | compressed air   |
| <b>Pressure gauge</b>        | built-in pressure gauge (standard)<br>with G1/8 port   |

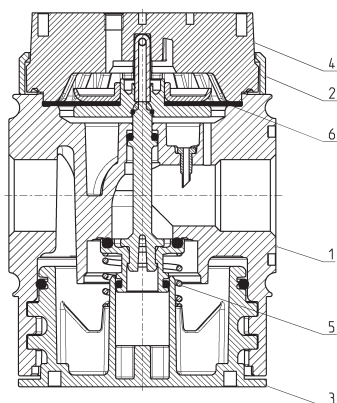
## CODING EXAMPLE

|           |          |          |            |          |          |           |          |          |          |          |           |
|-----------|----------|----------|------------|----------|----------|-----------|----------|----------|----------|----------|-----------|
| <b>MX</b> | <b>2</b> | <b>-</b> | <b>1/2</b> | <b>-</b> | <b>R</b> | <b>CP</b> | <b>0</b> | <b>0</b> | <b>4</b> | <b>-</b> | <b>LH</b> |
|-----------|----------|----------|------------|----------|----------|-----------|----------|----------|----------|----------|-----------|

|            |   |
|------------|---|
| <b>MX</b>  | SERIES  |
| <b>2</b>   | SIZE:<br>2 = G3/8 - G1/2 - G3/4   |
| <b>1/2</b> | PORTS:<br>3/8 = G3/8<br>1/2 = G1/2<br>3/4 = G3/4  |
| <b>R</b>   | TYPER OF REGULATOR:<br>R = pressure regulator   |
| <b>CP</b>  | TYPE OF COMMAND/PILOT SUPPLY:<br>CP = pneumatic pilot supply  |
| <b>0</b>   | OPERATING PRESSURE:<br>0 = 0.5 ÷ 10 bar   |
| <b>0</b>   | DESIGN TYPE:<br>0 = relieving (standard)<br>1 = without relieving   |
| <b>4</b>   | PRESSURE GAUGE:<br>0 = without pressure gauge (with threaded port for gauges)<br>4 = with built-in pressure gauge 0-12 and working pressure 0.5 ÷ 10 bar (standard) |
| <b>LH</b>  | FLOW DIRECTION:<br>= from left to right (standard)<br>LH = from right to left   |

For the assembly of a single component with fixing flanges or wall-mounting, see the section "FRL Series MX Assembled"

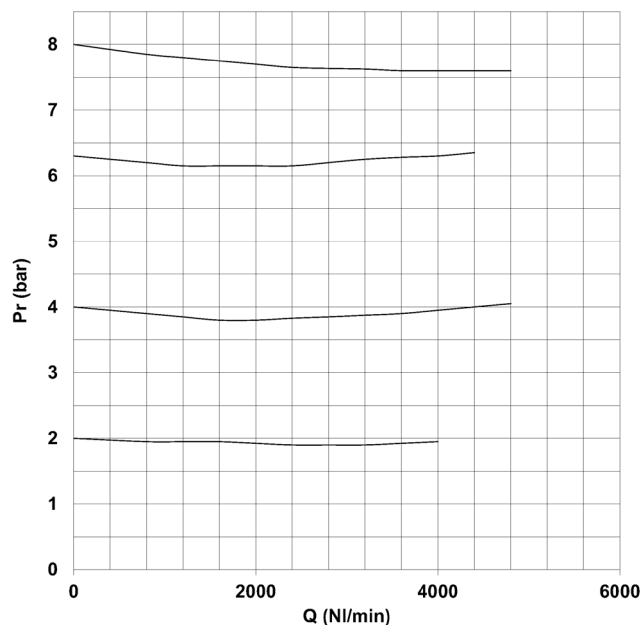
## Pneumatic pilot operated pressure regulators Series MX - materials



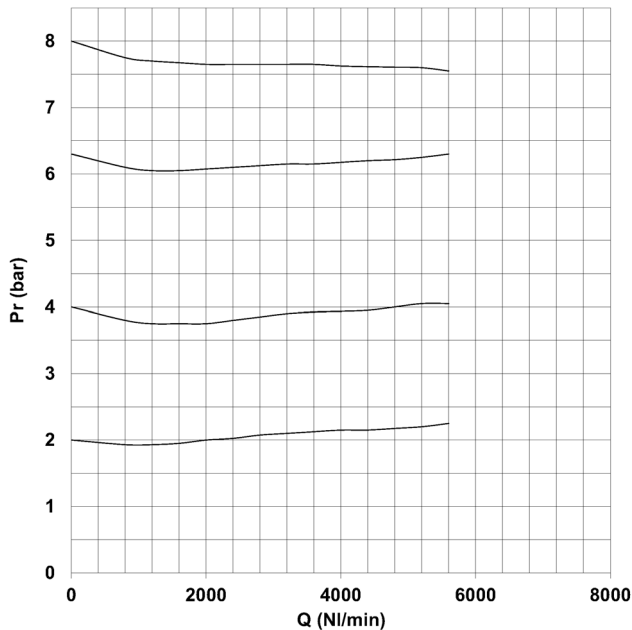
| PARTS                        | MATERIALS       |
|------------------------------|-----------------|
| <b>1 = Body</b>              | Aluminium       |
| <b>2 = Covering</b>          | Polyacetal      |
| <b>3 = Valve holder plug</b> | Polyacetal      |
| <b>4 = Upper base</b>        | Polyamide       |
| <b>5 = Lower spring</b>      | Stainless steel |
| <b>6 = Diaphragm</b>         | NBR             |
| <b>Seals</b>                 | NBR             |

## DIAGRAMS OF PNEUMATIC PILOT OPERATED PRESSURE REGULATORS

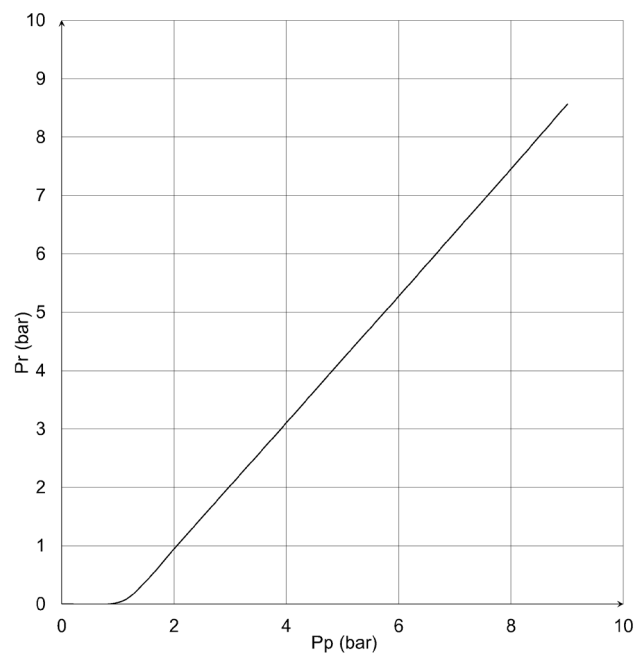
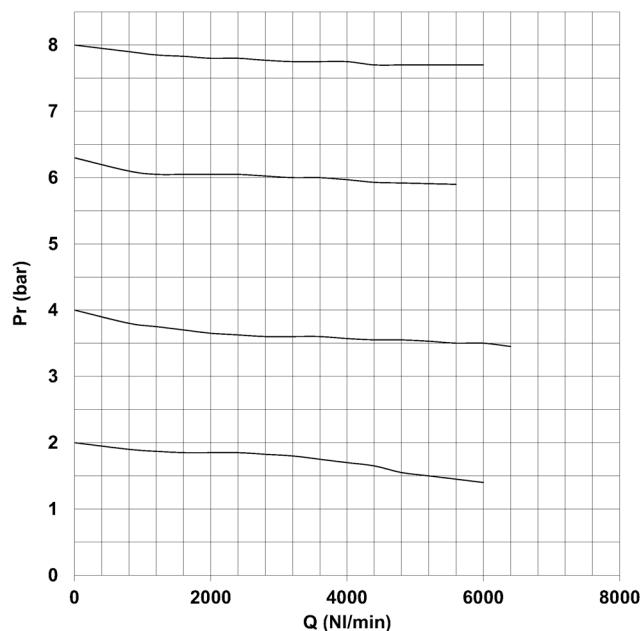
MX2-3/8-RCP000



MX2-1/2-RCP000



MX2-3/4-RCP000



ADJUSTMENT CURVE

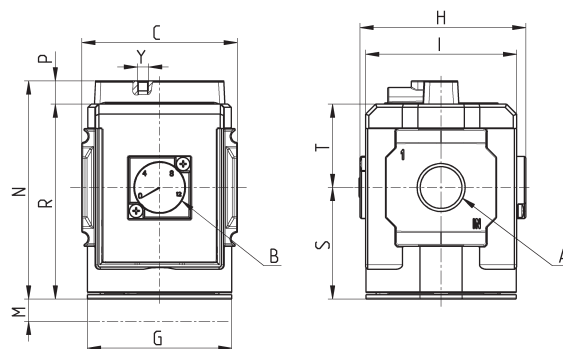
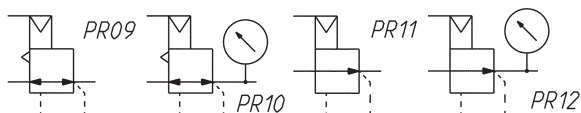
Pr = regulated pressure (bar)  
Pp = pilot pressure (bar)

Inlet pressure = 10bar

## Pneumatic pilot operated pressure regulators Series MX - dimensions



PR09 = reg. with relieving  
PR10 = regulator with  
relieving and pressure gauge  
PR11 = regulator without  
relieving  
PR12 = regulator without  
relieving and with pressure gauge



| Mod.           | A    | B (bar) | C  | G  | H    | I  | M  | Y (Pilot supply) | N  | P  | R  | S    | T    | Weight (Kg) |
|----------------|------|---------|----|----|------|----|----|------------------|----|----|----|------|------|-------------|
| MX2-3/8-RCP004 | G3/8 | 0 ÷ 12  | 70 | 65 | 74.5 | 68 | 45 | M5               | 98 | 10 | 88 | 50.5 | 37.5 | 0.5         |
| MX2-1/2-RCP004 | G1/2 | 0 ÷ 12  | 70 | 65 | 74.5 | 68 | 45 | M5               | 98 | 10 | 88 | 50.5 | 37.5 | 0.5         |
| MX2-3/4-RCP004 | G3/4 | 0 ÷ 12  | 70 | 65 | 74.5 | 68 | 45 | M5               | 98 | 10 | 88 | 50.5 | 37.5 | 0.5         |