

Series MC assembled FRL

Ports G1/4, G3/8 and G1/2

SERIES MC ASSEMBLED FRL



- » Clean design
- » Great modularity
- » Easy maintenance

The FRL Series MC in the assembled version can be easily assembled by means of modular tie rods on which it is possible to mount the single elements without any limits in the composition. The FRL groups Series MC are available already mounted (with a single code).

The connections can be made directly on the elements or on the terminal flanges (Kit A) with the advantage that in case of maintenance the group can be extracted without disconnecting the tubing. The version with flanges is supplied without tie-rods.

GENERAL DATA

Construction	modular, compact
Materials	zama, NBR, technopolymer
Ports	G1/4 - G3/8 - G1/2
Mounting	vertical, in-line or wall-mounting
Operating temperature	-5°C ÷ 50°C at 10 bar (with the dew point of the fluid lower than 2°C at the min. working temperature)
Finish	enamelled
Flow	determined at 6 bar inlet supply with ΔP 1 bar (ΔP 0,5 only for FRL)

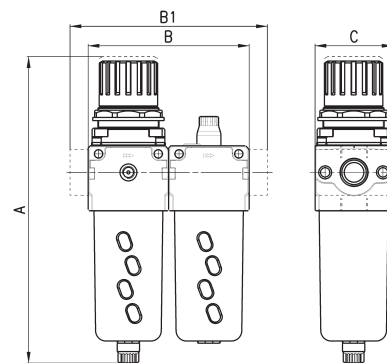
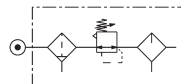
CODING EXAMPLE

MC	2	02	-	C	-	5	-	FL
----	---	----	---	---	---	---	---	----

MC	MC = SERIES
2	SIZE 1 = G1/4 2 = G3/8 - G1/2
02	PORT 04 = G1/4 38 = G3/8 02 = G1/2
C	ASSEMBLY GROUP C = D + L E = V01 + D + L FRL = F + R + L GN = D + L + V16 + AV HNA = V01 + D + L + V16 + AV + PRESS NO HNC = V01 + D + L + V16 + AV + PRESS NC N = V01 + D PN = D + V16 + AV QN = V01 + D + V16 + AV TN = V01 + D + L + V16 + AV U = F13 + FB3 (only for 3/8 - 1/2) ZNA = V01 + D + V16 + AV + PRESS NO ZNC = V01 + D + V16 + AV + PRESS NC
5	FILTERING ELEMENT 5 = 5 µm (standard) 25 = 25 µm (upon request)
FL	VERSION FL = with terminal flanges (without brackets)
<p>LEGEND:</p> <p>D = Filter-regulator 0.5-10 bar, semi-automatic-manual drain with relieving, filtering element 5 µm or 25 µm</p> <p>L = Lubricator</p> <p>V01 = 3/2-way manually operated valve</p> <p>F = Filter 5 µm or 25 µm</p> <p>R = Regulator 0.5-10 bar with relieving</p> <p>V16 = 3/2-way electropneumatically operated valve</p> <p>AV = Soft start valve</p> <p>PRESS NO = Pressure switch, Normally Open</p> <p>PRESS NC = Pressure switch, Normally Closed</p> <p>F13 = Filter 5 µm with automatic drain</p> <p>FB3 = Coalescing filter 0.01 µm with automatic drain</p>	

Assembly group C

Components:
Filter-regulator
Lubricator

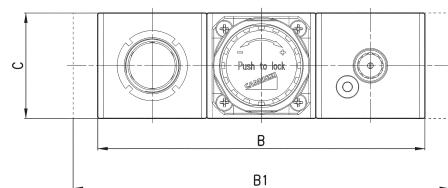
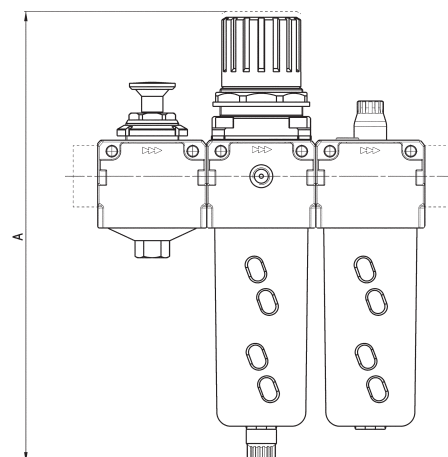


DIMENSIONS					
Mod.	A	B	B1	C	Flow rate (NL/min)
MC104-C-5	193,5	90	-	45	1450
MC238-C-5	256,5	124	-	60	4800
MC202-C-5	256,5	124	-	60	4900
MC104-C-5-FL	193,5	-	114	45	1450
MC238-C-5-FL	256,5	-	152	60	4800
MC202-C-5-FL	256,5	-	152	60	4900

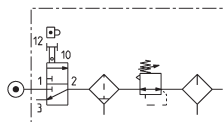
Assembly group E



Components:
Lockable isolation 3/2-way valve
Filter-regulator
Lubricator



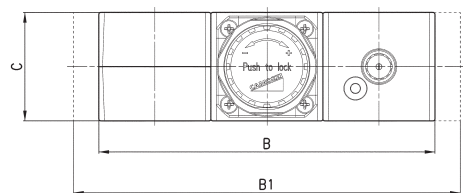
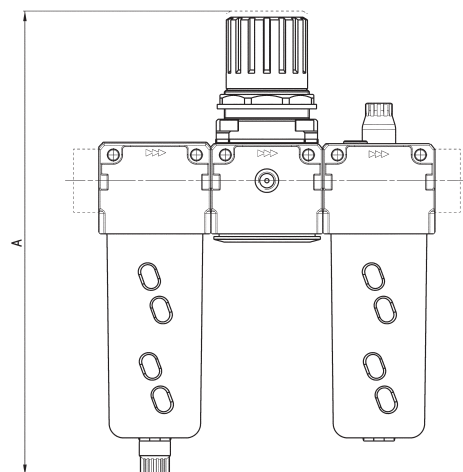
DIMENSIONS					
Mod.	A	B	B1	C	Flow rate (NI/min)
MC104-E-5	193,5	135	-	45	1450
MC238-E-5	256,5	186	-	60	4800
MC202-E-5	256,5	186	-	60	4950
MC104-E-5-FL	193,5	-	159	45	1450
MC238-E-5-FL	256,5	-	214	60	4800
MC202-E-5-FL	256,5	-	214	60	4950



Assembly group FRL



Components:
Filter
Regulator
Lubricator



DIMENSIONS					
Mod.	A	B	B1	C	Flow rate (NI/min)
MC104-FRL-5	193	135	-	45	1450
MC238-FRL-5	256,5	186	-	60	4800
MC202-FRL-5	256,5	186	-	60	4900
MC104-FRL-5-FL	193,5	-	159	45	1450
MC238-FRL-5-FL	256,5	-	214	60	4800
MC202-FRL-5-FL	256,5	-	214	60	4900

